

UIL BASEBALL, BASKETBALL, SOCCER, SOFTBALL, AND VOLLEYBALL TOURNAMENTS

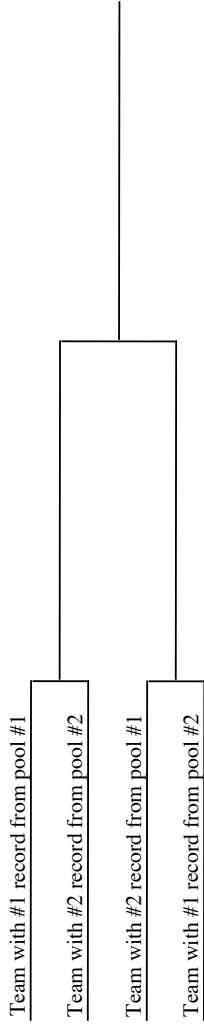
| | Baseball | Basketball | Soccer | Softball | Volleyball |
|-------------------------|--|--|--|--|---|
| • Traditional | | | | | |
| No. of teams: | No limit | No limit | No limit | No limit | No limit |
| Site: | Host ISD or adjoining ISD (If no more than 8 schools in tourney prelim round games may be played at home site of any school in tourney.) | Host ISD or adjoining ISD (If no more than 8 schools in tourney prelim round games may be played at home site of any school in tourney.) | Host ISD or adjoining ISD (If no more than 8 schools in tourney prelim round games may be played at home site of any school in tourney.) | Host ISD or adjoining ISD (If no more than 8 schools in tourney prelim round games may be played at home site of any school in tourney.) | Host ISD or adjoining ISD (If no more than 8 schools in tourney prelim round matches may be played at home site of any school in tourney.) |
| Possible Days: | Thursday, Friday, Saturday (unless school is not in session) A two-day tournament shall not be scheduled on Thursday and Friday. | Thursday, Friday, Saturday (unless school is not in session) A two-day tournament shall not be scheduled on Thursday and Friday. | Thursday, Friday, Saturday (unless school is not in session) A two-day tournament shall not be scheduled on Thursday and Friday. | Thursday, Friday, Saturday (unless school is not in session) A two-day tournament shall not be scheduled on Thursday and Friday. | Thursday, Friday, Saturday (unless school is not in session) A two-day tournament shall not be scheduled on Thursday and Friday. |
| Game Limit and Makeups: | If a semifinal game is played, count as a tournament. If not reaching semifinals, early games could count on 17 game and 3 tournament limit, and another tournament could be played. | If a semifinal game is played, count as a tournament. If not reaching semifinals, early games could count on 21 game and 3 tournament limit, and another tournament could be played. | If a semifinal game is played, count as a tournament. If not reaching semifinals, early games could count on 15 game and 3 tournament limit, and another tournament could be played. | If a semifinal game is played, count as a tournament. If not reaching semifinals, early games could count on 17 game and 3 tournament limit, and another tournament could be played. | If a semifinal match is played, count as a tournament. If not reaching semifinals, early matches could count on 23 game and 3 tournament limit, and another tournament could be played. |
| Contests Per Day: | Three games. | Two games. | Two games. | Three games. | Three matches. (four matches in a one or two day tournament) |
| • Pool Play | | | | | |
| Teams: | No limit | No limit | No limit | No limit | No limit |
| Site: | Host ISD or adjoining ISD (If no more than 8 schools in tourney prelim round games may be played at home site of any school in tourney.) | Host ISD or adjoining ISD (If no more than 8 schools in tourney prelim round games may be played at home site of any school in tourney.) | Host ISD or adjoining ISD (If no more than 8 schools in tourney prelim round games may be played at home site of any school in tourney.) | Host ISD or adjoining ISD (If no more than 8 schools in tourney prelim round games may be played at home site of any school in tourney.) | Host ISD or adjoining ISD (If no more than 8 schools in tourney prelim round matches may be played at home site of any school in tourney.) |
| Days: | Thursday, Friday, Saturday (unless school is not in session) A two-day tournament shall not be scheduled on Thursday and Friday. | Thursday, Friday, Saturday (unless school is not in session) A two-day tournament shall not be scheduled on Thursday and Friday. | Thursday, Friday, Saturday (unless school is not in session) A two-day tournament shall not be scheduled on Thursday and Friday. | Thursday, Friday, Saturday (unless school is not in session) A two-day tournament shall not be scheduled on Thursday and Friday. | Thursday, Friday, Saturday (unless school is not in session) A two-day tournament shall not be scheduled on Thursday and Friday. |

Tournaments, page 2

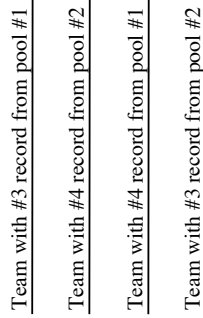
| | Baseball | Basketball | Soccer | Softball | Volleyball | | | | | | | | | | | | | | | | | | | | | | | | |
|---|---|---|---|---|--|--|---------|--|---------|--------------|----------------------|--|----------------------|--------------|----------------------|--|----------------------|--------------|----------------------|--|----------------------|----------------------------------|--|--|----------------------------------|--|----------------------------------|--|----------------------------------|
| Pool Play (continued) | | | | | | | | | | | | | | | | | | | | | | | | | | | | | |
| Length of Games: | Regulation after advancing from pool. (4 inning in pools, extra inning for ties.) | Regulation after advancing from pool. (4 minute quarters in pools, 2 minute overtime periods.) | Regulation after advancing from pool. (20 minute halves in pools, sudden death for ties.) | Regulation after advancing from pool. (4 inning in pools, extra inning for ties.) | Regulation after advancing from pool. (2 rally scored games to 15 points in pool, starting score is 0-0, cap at 20.) | | | | | | | | | | | | | | | | | | | | | | | | |
| Count per UJL | | | | | | | | | | | | | | | | | | | | | | | | | | | | | |
| Season Limitation: | One of allowed three tournaments. | One of allowed three tournaments. | One of allowed three tournaments. | One of allowed three tournaments. | One of allowed three tournaments. | | | | | | | | | | | | | | | | | | | | | | | | |
| Place Standing in Pool | Determined by win-loss record during which each team in pool plays each other. (see samples) | Determined by win-loss record during which each team in pool plays each other. (see samples) | Determined by win-loss record during which each team in pool plays each other. (see samples) | Determined by win-loss record during which each team in pool plays each other. (see samples) | Determined by win-loss record during which each team in pool plays each other. (see samples) | | | | | | | | | | | | | | | | | | | | | | | | |
| Tournament: | | | | | | | | | | | | | | | | | | | | | | | | | | | | | |
| Effects on Win-Loss Record: | Only count regulation games in single elimination bracket. (Mini games do not count on record.) | Only count regulation games in single elimination bracket. (Mini games do not count on record.) | Only count regulation games in single elimination bracket. (Mini games do not count on record.) | Only count regulation matches in single elimination bracket. (Mini games do not count on record.) | Only count regulation matches in single elimination bracket. (Mini games do not count on record.) | | | | | | | | | | | | | | | | | | | | | | | | |
| <p>◊ In baseball, basketball, softball, and soccer:</p> <p>1) Two teams tied in percentage for first place: the team that defeated the other in head-to-head competition will be the winner. The other team will be the runnerup.</p> <p>2) Three teams tied in percentage for first place: Step 1) Add points scored against all teams involved. The team with the least points scored against wins. Step 2) If a tie still remains add points scored by each team to determine the winner. Step 3) If a tie still remains, flip a coin.</p> | | | | | | | | | | | | | | | | | | | | | | | | | | | | | |
| <p>◊ In volleyball:</p> <p>1) Two teams tied in percentage for first place: the team that defeated the other in head-to-head competition will be the winner. The other team will be the runner-up. If teams split in pool games, add points scored against all teams involved.</p> <p>2) Three teams tied in percentage for first place: Step 1) Add points scored against all teams involved. The team with the least points scored against wins. Step 2) If a tie still remains, flip a coin.</p> | | | | | | | | | | | | | | | | | | | | | | | | | | | | | |
| <p>• Pool Play Sample</p> <p>Part I: Mini games/matches recommended:</p> <table border="1" style="width: 100%; border-collapse: collapse;"> <thead> <tr> <th style="width: 50%;"></th> <th style="width: 50%; text-align: center;">Pool #1</th> <th style="width: 50%;"></th> <th style="width: 50%; text-align: center;">Pool #2</th> </tr> </thead> <tbody> <tr> <td>Mini Game 1:</td> <td style="text-align: center;">Teams 1 vs 2; 3 vs 4</td> <td></td> <td style="text-align: center;">Teams 5 vs 6; 7 vs 8</td> </tr> <tr> <td>Mini Game 2:</td> <td style="text-align: center;">Teams 1 vs 3; 2 vs 4</td> <td></td> <td style="text-align: center;">Teams 5 vs 7; 6 vs 8</td> </tr> <tr> <td>Mini Game 3:</td> <td style="text-align: center;">Teams 1 vs 4; 2 vs 3</td> <td></td> <td style="text-align: center;">Teams 5 vs 8; 6 vs 7</td> </tr> </tbody> </table> <p>If mini games/matches are played, count the entire pool as only one of the games/matches allowed per day. If a regulation game/match is played in the single elimination tourney, count each game/match as one of the allowed per day.</p> <p>Part II: Determine win/loss record and go to bracketed play (options A, B, and C)</p> <p>Option A:</p> <table border="1" style="width: 100%; border-collapse: collapse;"> <tr> <td style="width: 50%; text-align: center;">Team with #1 record from pool #1</td> <td style="width: 50%;"></td> </tr> <tr> <td style="width: 50%;"></td> <td style="width: 50%; text-align: center;">Team with #2 record from pool #2</td> </tr> <tr> <td style="width: 50%;"></td> <td style="width: 50%; text-align: center;">Team with #1 record from pool #2</td> </tr> <tr> <td style="width: 50%;"></td> <td style="width: 50%; text-align: center;">Team with #2 record from pool #1</td> </tr> </table> <p>Each game/match in single elimination tournament counts as one of game/match allowed per day.</p> | | | | | | | Pool #1 | | Pool #2 | Mini Game 1: | Teams 1 vs 2; 3 vs 4 | | Teams 5 vs 6; 7 vs 8 | Mini Game 2: | Teams 1 vs 3; 2 vs 4 | | Teams 5 vs 7; 6 vs 8 | Mini Game 3: | Teams 1 vs 4; 2 vs 3 | | Teams 5 vs 8; 6 vs 7 | Team with #1 record from pool #1 | | | Team with #2 record from pool #2 | | Team with #1 record from pool #2 | | Team with #2 record from pool #1 |
| | Pool #1 | | Pool #2 | | | | | | | | | | | | | | | | | | | | | | | | | | |
| Mini Game 1: | Teams 1 vs 2; 3 vs 4 | | Teams 5 vs 6; 7 vs 8 | | | | | | | | | | | | | | | | | | | | | | | | | | |
| Mini Game 2: | Teams 1 vs 3; 2 vs 4 | | Teams 5 vs 7; 6 vs 8 | | | | | | | | | | | | | | | | | | | | | | | | | | |
| Mini Game 3: | Teams 1 vs 4; 2 vs 3 | | Teams 5 vs 8; 6 vs 7 | | | | | | | | | | | | | | | | | | | | | | | | | | |
| Team with #1 record from pool #1 | | | | | | | | | | | | | | | | | | | | | | | | | | | | | |
| | Team with #2 record from pool #2 | | | | | | | | | | | | | | | | | | | | | | | | | | | | |
| | Team with #1 record from pool #2 | | | | | | | | | | | | | | | | | | | | | | | | | | | | |
| | Team with #2 record from pool #1 | | | | | | | | | | | | | | | | | | | | | | | | | | | | |

Pool Play Sample (continued)

Option B:



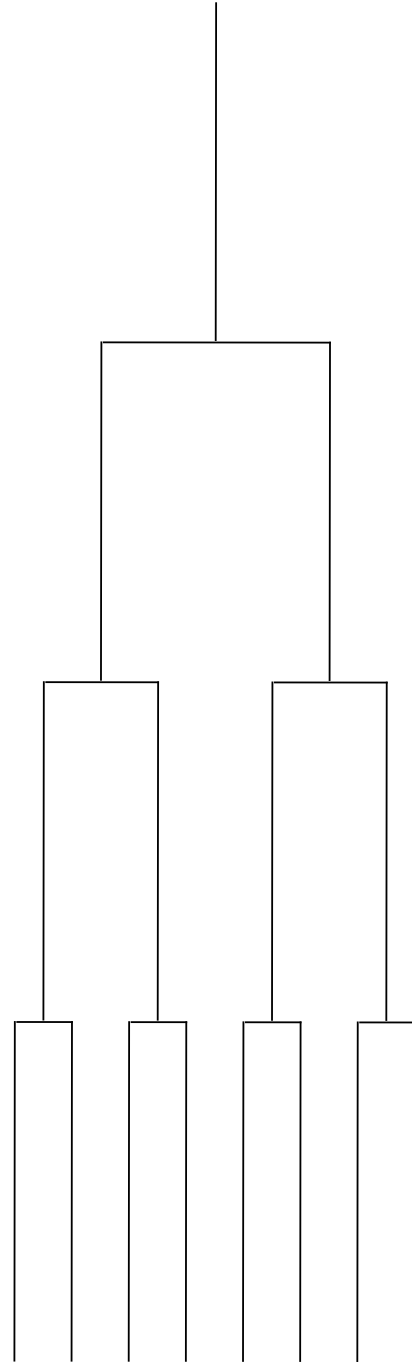
Winners Bracket



Consolation Bracket

Do not mingle brackets. In baseball, basketball and soccer, this bracket play would have to be played on separate days from pool play. In volleyball, this would not have to be played on separate days.

OPTION C: Seed according to records in pools for 8 team elimination bracket. In all team sports, one additional day is needed since all regulation games/matches in bracket (total 3) could not be played in one day without exceeding daily game/match limitations.



Tournaments, page 4

| | Baseball | Basketball | Soccer | Softball | Volleyball |
|---|--|--|--|--|--|
| <p>• Round Robin (single elimination)</p> <p>Maximum Number of Teams</p> | Seven | Seven | Seven | No limit | Ten |
| Site: | Same or adjoining ISD unless additional sites for prelims. | Same or adjoining ISD unless additional sites for prelims. | Same or adjoining ISD unless additional sites for prelims. | Same or adjoining ISD unless additional sites for prelims. | Same or adjoining ISD unless additional sites for prelims. |
| Possible Days: | Thursday, Friday, Saturday (unless school is not in session) A two-day tournament shall not be scheduled on Thursday and Friday. | Thursday, Friday, Saturday (unless school is not in session) A two-day tournament shall not be scheduled on Thursday and Friday. | Thursday, Friday, Saturday (unless school is not in session) A two-day tournament shall not be scheduled on Thursday and Friday. | Thursday, Friday, Saturday (unless school is not in session) A two-day tournament shall not be scheduled on Thursday and Friday. | Thursday, Friday, Saturday (unless school is not in session) A two-day tournament shall not be scheduled on Thursday and Friday. |
| Games: | Max: Six | Max: Six | Max: Six | Max: Six | Max: Six |
| Length of Games: | Regulation | Regulation | Regulation | Regulation | Regulation |
| UIL Tournament Limitation Count: | One of allowed three. | One of allowed three. | One of allowed three. | One of allowed three. | One of allowed three. |
| Place Standing in Tournament: | Win-loss record.* | Win-loss record.* | Win-loss record.* | Win-loss record.* | Win-loss record.** |
| How Tourney Effects Overall Season Win-Loss: | Count all regulation games. | Count all regulation games. | Count all regulation games. | Count all regulation matches. | Count all regulation matches. |
| Round Robin Ties: | Ties will be broken by sudden death as determined by director. | Ties will be broken by sudden death as determined by director. | Ties will be broken by sudden death as determined by director. | Ties will be broken by sudden death as determined by director. | Ties will be broken by sudden death as determined by director. |
| Contests Per Day: | Three | Maximum 2 since all games are regulation. | Maximum 2 since all games are regulation. | Three | Maximum 3 since all matches are regulation. (4 if 1 or 2 day tournament) |

In addition, for tournament ties:

* **In baseball, basketball, softball, and soccer:**

- 1) Two teams tied in percentage for first place: the team that defeated the other in head-to-head competition will be the winner. The other team will be the runner-up.
- 2) Three teams tied in percentage for first place: Step 1) Add points scored against all teams involved. The team with the least points scored against wins. Step 2) If a tie still remains add points scored by each team to determine the winner. Step 3) If a tie still remains, flip a coin.

****In volleyball:**

- 1) Two teams tied in percentage for first place: the team that defeated the other in head-to-head competition will be the winner. The other team will be the runner-up.
- 2) Three teams tied in percentage for first place: Step 1) Add points scored against all teams involved. The team with the least points scored against wins. Step 2) If a tie still remains, flip a coin.

TRADITIONAL TOURNAMENTS ILLUSTRATION

Sample 16 team tournament (no limit on number of teams unless host wants to use additional sites for preliminary games. If additional sites are used for preliminary games, maximum eight teams in tournament.)



CONSOLATION

