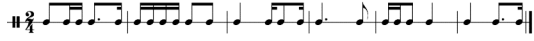


**Answer Sheet**

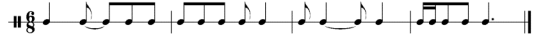
1. [2 points] c

2. [3 points; ½ pt. per bar] Barlines after 5<sup>th</sup>, 11<sup>th</sup>, 15<sup>th</sup>, 17<sup>th</sup>, 21<sup>st</sup>, and 24<sup>th</sup> note:



3. [1 point] c

4. [4 points; 1 pt. per bar]:



5. [2 points] 3, 2, 4, 1



6. [1 point]



7. [1 point]



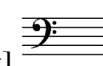
8. [1 point]



9. [1 point]



10. [1 point]



11. [1 point]



12. [1 point]



13. [1 point]

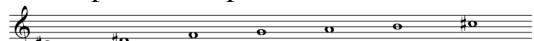
14: [2points; no partial credit]



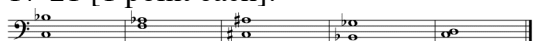
15: [2 points; no partial credit]



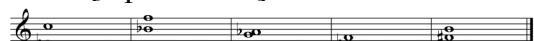
16: [2 points; no partial credit]



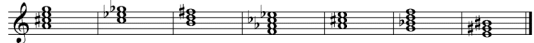
17-21 [1 point each]:



22-26 [1 point each]:



27-33 [1 point each]:

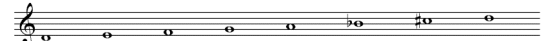


34: [12 points]

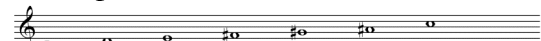


F: I vi6 ii V I

35. [2 points] c



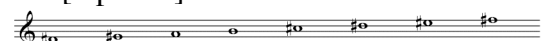
36. [2 points] e



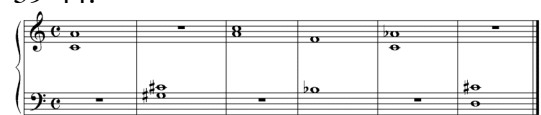
37. [2 points] a



38. [2 points] d



39-44:



39. [2 points] M6

40. [2 points] p4

41. [2 points] m3

42. [2 points] P5

43. [2 points] m6

44. [2 points] M7

45-48:



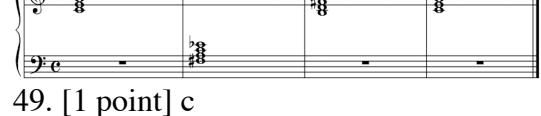
45. [1 point] c

46. [1 point] b

47. [1 point] d

48. [1 point] a

49-52:



49. [1 point] c

50. [1 point] e

51. [1 point] b

52. [1 point] a

53. [1 point] 2/4 OR 4/4

54. [1 point] 3/4

55. [1 point] 6/8 OR 12/8

56. [1 point] 2/4 OR 4/4

57. [13 points; ½ pt. for each pitch; ½ pt. for each tone duration]

